

Warehouse to store minis

It is most convenient to store cardboard figures in special foil cards in a binder. It allows you to conveniently view the figures. You can buy them, but not all the dimensions you need. You can easily make such a card yourself. The card has flaps to prevent the figures from falling out.



The thickness is sufficient



You have to prepare



Documents sleeve



Soldering iron

temperature set to approx. 190°C



Round beveled tip for soldering iron

Backing of thick cardboard or corrugated cardboard



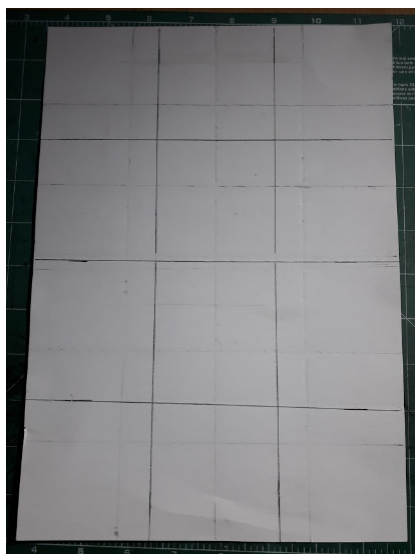
2

1



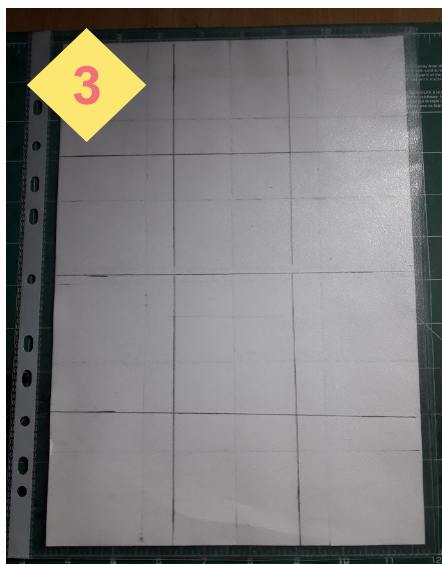
Cut off the envelope flap

2



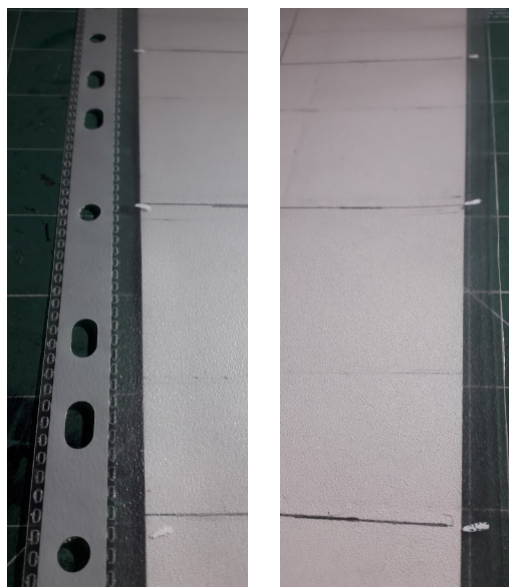
Prepare a sheet with a picture of envelopes

3



Place a foil envelope centrally on it

4



Mark the horizontal cutting lines with a marker

5



Put a plastic (or thick cardboard) plate in the center, where you can cut it

6



First, cut in the marked area, then the second cut next to it, approx. 7-10mm

7



Make the last cut at the top, 5mm from the edge of the envelope

9

First, weld only the internal cuts, only in the marked places

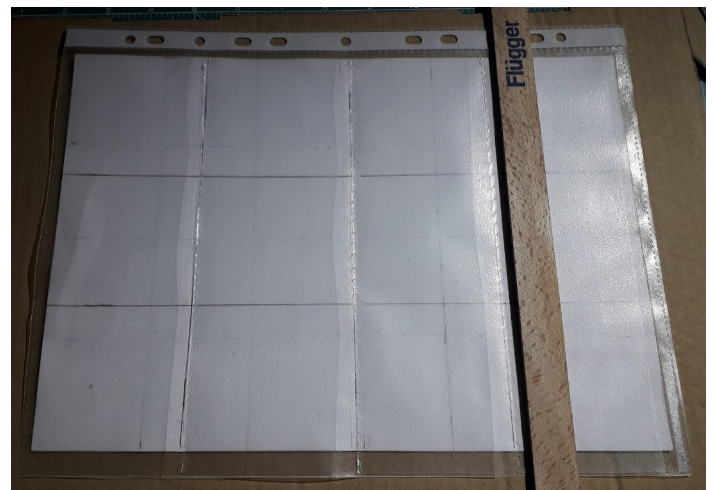
8



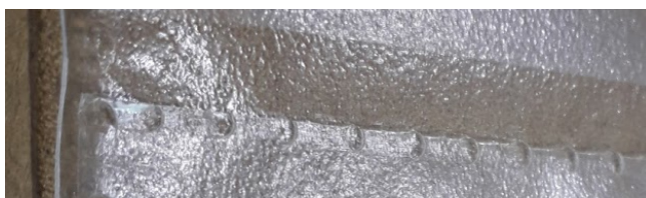
Set the temperature in the soldering iron

Before welding, test the welding on scraps of foil. The soldering iron should not pierce the foil. Perform welding by moving the tip with the flat part on the foil, press more firmly every 2-3 mm. Make the welds with a soldering iron next to a wooden ruler.

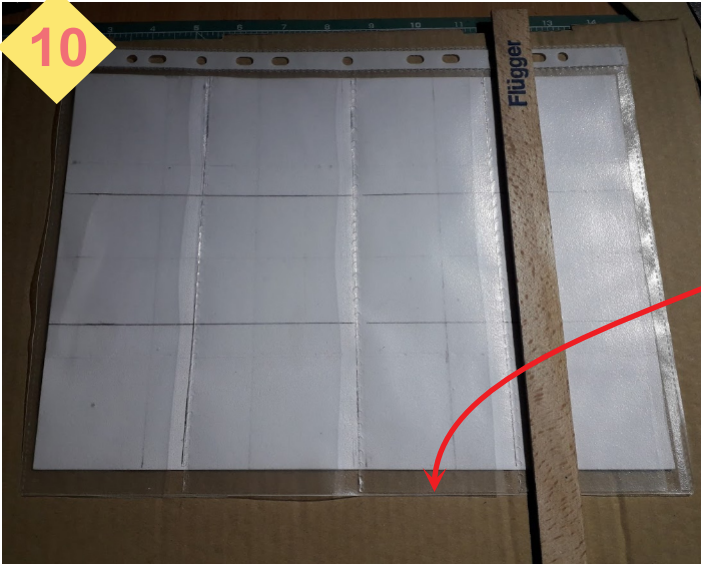
On a cardboard support, put the sheet with the drawing, and on top of it the cut envelope



Good appearance of the weld



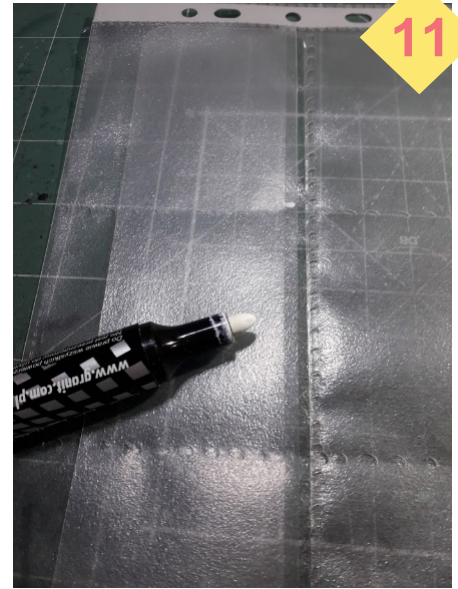
10



Weld the side edge of the envelope

*Prepare a strip of foil about 4cm (1.5in) wide.
Mark the width of the flap on it.
Cut in selection.*

11



12



*Set the flap min. 3mm above the weld.
On the flap, make a weld on the existing
weld on the envelope.*

Ready binder insert for storing minis.

